

# Brilliance

craft  
central  
on show



Encounter covetable jewellery

9-12 June 2009

[www.craftcentral.org.uk/brilliance](http://www.craftcentral.org.uk/brilliance)

Brilliance returns for 2009 to celebrate Coutts London Jewellery Week, showcasing exceptional contemporary jewellery designers at Craft Central.

**Venue:** Craft Central, 33-35 St John's Square, London EC1M 4DS

**Brilliance Selling Exhibition:** Tues 9 – Fri 12 June 2009, 12 – 6pm.

**Launch Night (Private View):** Tues 9 June, 6-8pm

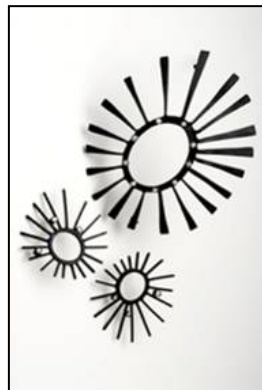
**'Meet the Maker' Late Night Shopping event:** Thurs 10 June, 6-8pm

**Jewellery Studio Tours:** Thurs 11 and Fri 12 June, Studios Open 2-5pm

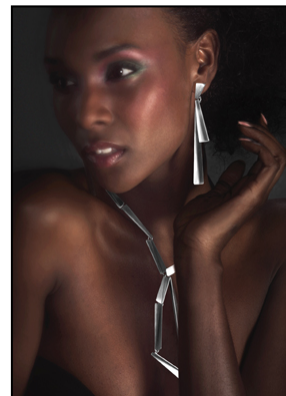
Serena Park



Mayza Joao



Daphne Krinos



Elizabeth Bone



An Alleweireldt



Maria Helena Spector



Christine Kaltoft

Craft Central will unveil a stunning **selling exhibition** featuring 15 shining jewellery talents at its central London gallery, to celebrate Coutts London Jewellery Week 2009.

Brilliance presents designers at the forefront of their discipline, chosen for the original and innovative nature of their outstanding handmade jewellery. Don't miss the exciting chance to mingle with the designers, at an informal **Meet the Maker event**.

Visitors will also be thoroughly spoilt with an intriguing 'behind the scenes' opportunity. Selected designers' studios will be open to the public during special **jewellery tours** around Craft Central's two buildings. An exclusive chance to go back to the roots of making and discover the fascinating processes! So, having taken advantage of the remarkable work on display - whether selecting a unique gift, treating yourself or simply browsing in the spirit of Jewellery Week - the experience will be topped off by meeting the maker.

**The 15 selected jewellery designers for Brilliance 2009 have been announced:**

**An Alleweireldt, Elizabeth Bone, Daisy Choi, Angela Fung, Mayza João, Christine Kaltoft, Amy Keeper, Daphne Krinos, Serena Park, Catherine Mannheim, Mark Nuell, Sarah Pulvertaft, Maria Helena Spector, Rebecca Steiner, and Fiona Wright.**

Further information and high quality visuals are available from: 020 7251 0276

Sarah Hewett, Events Manager [sarah.hewett@craftcentral.org.uk](mailto:sarah.hewett@craftcentral.org.uk)

Siobhan Henderson, Events Administrator [siobhan.henderson@craftcentral.org.uk](mailto:siobhan.henderson@craftcentral.org.uk)

## Further Notes on the Participating Designers

**Christine Kaltoft's** contemporary graphic jewellery is about expressing feelings and reflecting a sense of movement and exuberance. Inspiration comes primarily from sketches of her pet chickens as they scratch, peck, and flap round the garden. Her new handmade collection of gold and 'dark grey' silver is not only lightweight and wearable but unique.

**Maria Helena Spector's** pieces combine both lapidary and silversmithing techniques to create striking, colourful pieces including hand polished stones and handmade silver beads. Her inspiration derives from her childhood in Peru and her education in Europe. Her artist's background brings a painter's and sculptor's perspective on colour and shape to her work.

**Catherine Mannheim's** work is concerned with the construction of shapes using both gold and silver. She combines constructed shapes with precious stones and uses a variety of stakes and hammers to achieve hollow forms. Her current style is influenced by modern architecture and urban forms and sentiment.

**Rebecca Steiner's** work encourages the wearer to look inside and see the detail. Most recently she has been exploring the concept of balance and making fine asymmetric pieces using different metals, chains and strings of pearls to create traditional pieces with a surprising twist and opulence.

London based designer **Mark Nuell** is influenced by the process of forging metal. The collection revealed at Brilliance will include bold lustrous stones, such as misty blue aquamarines, mint green or icy pink tourmalines and sapphires from the mines where he grew up in Australia.

Interested in the translation of the non-precious into precious, award-winning **Fiona Wright** works with recycled paper in an innovative and experimental manner. Her current work will be inspired by woodland-the branches, twigs and leaves of trees. She will be showing a collection of her larger 'trademark' pieces alongside new work.

Repetitive elements are a recurring theme throughout **Sarah Pulvertaft's** work and her contemporary style for men and women often has kinetic elements and richly coloured enamels or semi-precious stones. She will be launching her 'Seed Collection' at Brilliance this year.

**Daphne Krinos's** handmade jewellery designs are inspired by her immediate environment; the buildings and construction sites that populate her area of London as well as from the colours and lights of her native Greece. Brilliance will present a new collection developed from her more 'graphic' oxidised geometric pieces.

**Angela Fung**, winner of many craft awards, finds inspiration in mechanical parts. Movement, adaptability and function play a significant role in her jewellery designs. At Brilliance she will show the Spin range; a fascinating new collection of rings, where stones are suspended purely by the tension of the stainless steel band.

**Elizabeth Bone** strives for precision and purity. Her current hand processed precious metal collection explores the geometric form, focussing on spherical segments, bringing a previously unexplored organic quality to her jewellery.

**Amy Keeper** uses hand tinted photographic vintage postcards to make silver jewellery with a romantic narrative. Sometimes setting the images and writing behind rock crystals and glass or using photo-etching to suggest a cameo, her pieces reflect the romantic sentiment and vintage ideals written on the reverse of these old postcards.

**An Alleweireldt** is constantly inspired by new materials, surprising the viewer with their properties. Brilliance will see her expand her fascinating collection which juxtaposes everyday items (wood, natural seeds, old records, rubber, cord, etc) with precious metals and stones. Recently she has been focussing on developing a collection using string as an inspirational material.

**Serena Park's** jewellery are sculptural pieces combining glass blowing and goldsmithing techniques. She uses semi-precious stones, pure silver and glass. Her new work is inspired by contemporary architectural forms harmonised with natural forms to create an organic contemporary style with an elegant feminine beauty.

From an architectural background, **Mayza João** designs her collections using strong three dimensional forms to create pieces that are almost small wearable sculptures. Her pieces suit both men and women and are made in silver and gold using traditional and rapid prototype techniques.

**Daisy Choi's** jewellery combines artistic expression and functional wearability. Her new collection 'Of Gold and Pearls' will be at Brilliance- beautiful designs in yellow gold and irregular fresh water and South Sea pearls set with gems or diamonds making each piece unique.

## Notes to the Editor...

Please contact Sarah Hewett or Siobhan Henderson at Craft Central with any enquiries: 020 7251 0276  
[sarah.hewett@craftcentral.org.uk](mailto:sarah.hewett@craftcentral.org.uk) [siobhan.henderson@craftcentral.org.uk](mailto:siobhan.henderson@craftcentral.org.uk)

### Craft Central [www.craftcentral.org.uk](http://www.craftcentral.org.uk)

Craft Central's dynamic Network connects over 400 UK designer makers, helping them to discover valuable opportunities and benefit from really practical and well thought-out services and resources. Craft Central takes time to understand makers and encourages them to develop groundbreaking new work. Alongside this support, Craft Central promotes cutting edge craft and design to the public through an exciting programme of innovative exhibitions and events.

### Special Services for Industry and Press...

Media and buyers industry are invited to use Craft Central as a resource. Craft Central's current Network includes a portfolio of almost 400 cutting edge designers producing work in a vast array of disciplines (including; fashion, textiles, accessories, jewellery and interior products). Craft Central can help you source new products, maker's profiles, accessories for shoots, news stories and more.

**In order to bring talented designers and trade professionals together Craft Central offers a range of special service for industry and press visitors...**

### Designer Introductions... Bringing talented designers and trade professionals together.

To maximise your time, Craft Central can arrange a day of meetings providing the chance to view and discuss work by designers selected to match your requirements. International buyers already utilise this service and find it an essential tool when sourcing new products. These meetings take place at Craft Central's offices in London EC1M. View a selection of Craft Central designers in the online Designer Maker Gallery and just let us know if you would like to organize an appointment!

[www.craftcentral.org.uk/designermakergallery](http://www.craftcentral.org.uk/designermakergallery)

### Keeping you in touch... Keep up to date with the hottest design talent!

Throughout the year Craft Central organises an exciting programme of exhibitions and events to promote new work by contemporary designers. Press releases are circulated regularly, but if you have a specific request please get in touch!

To view the latest press releases visit [www.craftcentral.org.uk/press-area](http://www.craftcentral.org.uk/press-area)

To join our mailing list visit [www.craftcentral.org.uk/press-mailing-list](http://www.craftcentral.org.uk/press-mailing-list)